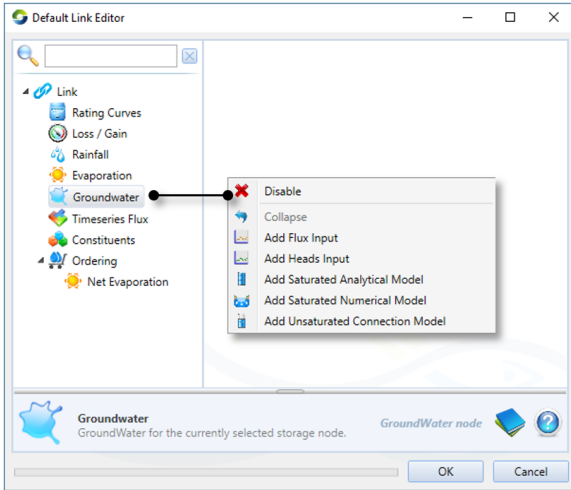


# Groundwater

This section describes the groundwater modelling tools that are available in Source, namely the:

- [Groundwater Numerical Model for 1-Dimensional Flow - GN1D](#)
- [Groundwater Analytical Tool - GAT](#)

The groundwater tools are available on **Storage Routing Link Routing**. Right clicking on the **Groundwater** menu item in the **Link Editor** displays the available groundwater models.



The *Saturated Numerical Model* refers to the GN1D model, while the *Flux Input*, *Heads Input*, *Saturated Analytical Model* and *Unsaturated Connection Model* are components of the GAT toolbox.

## Child Pages

- [Groundwater Numerical Model for 1-Dimensional Flow - GN1D](#)
- [Groundwater Analytical Tool - GAT](#)